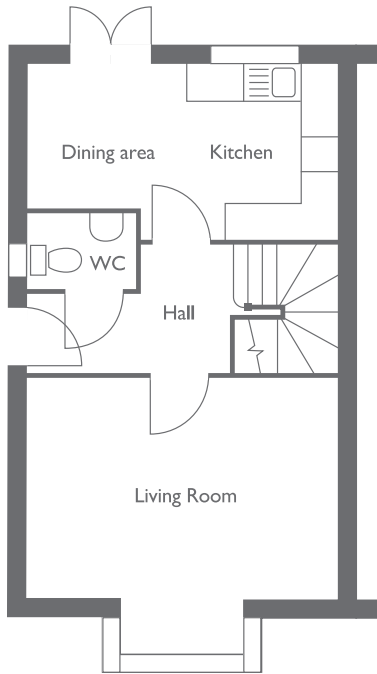


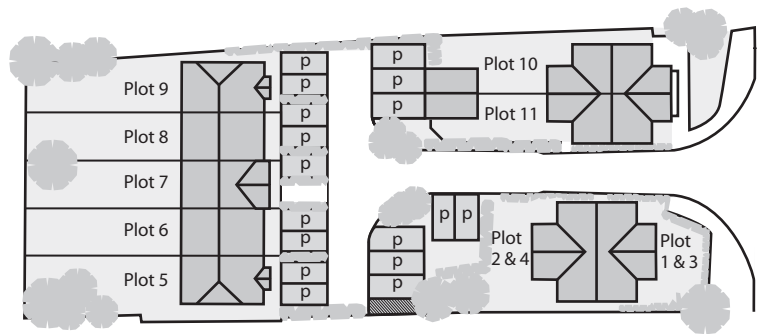
The MEWS

FLOOR PLANS – plot 9

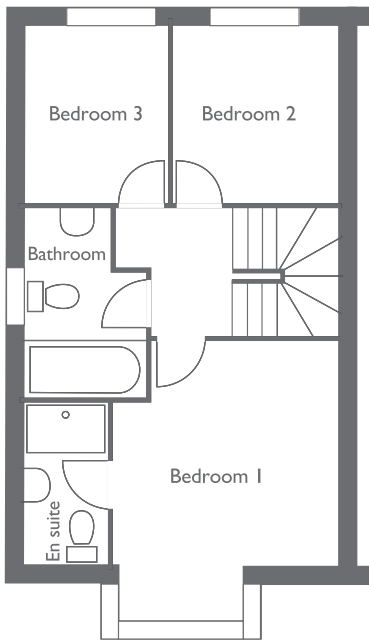
Plot 9		
Living Room :	4.85 x 3.45	15'11" x 11'4"
Kitchen/Dining :	4.85 x 3.45	15'11" x 11'4"
Bedroom 1 :	3.45 x 3.45	11'4" x 11'4"
Bedroom 2 :	2.60 x 2.78	8'6" x 9'2"
Bedroom 3 :	2.15 x 2.78	7'1" x 9'2"
Bonus Room :	4.85 x 6.29	15'11" x 20'8"



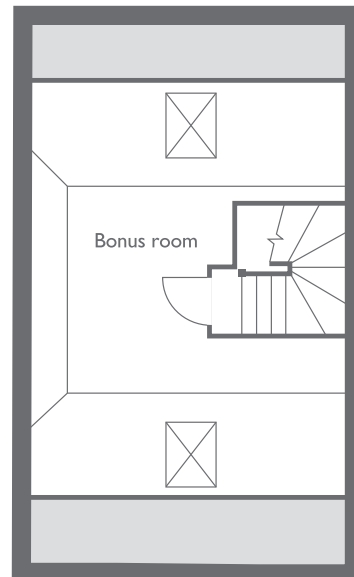
GROUND FLOOR



SECOND FLOOR



FIRST FLOOR



A development by



All enquiries to:
0844 4779451

The floor plans are for illustrative purposes only and are intended as a general indication. All measurements are taken from inside face of external walls and do not include any openings formed by galleries and stairs or garages.