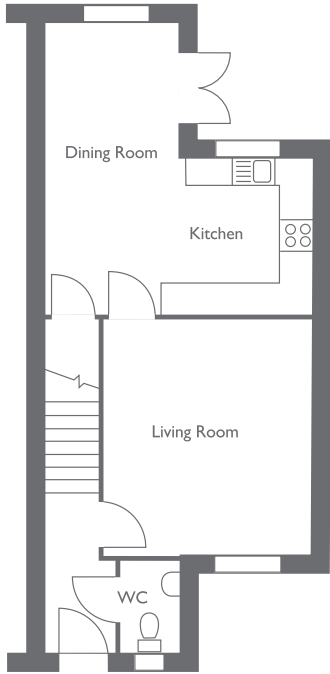
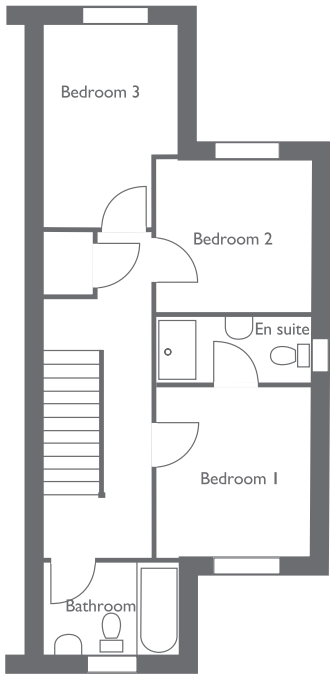


## FLOOR PLANS – plot 11

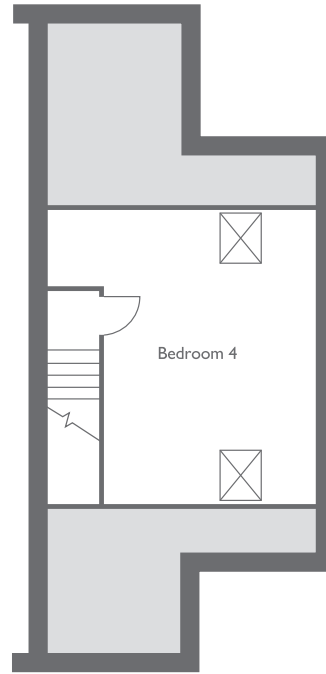
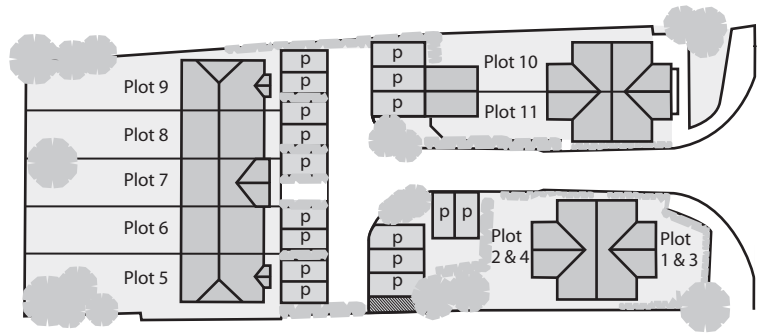
Plot 11		
Living Room :	4.49 x 4.95	14'9" x 16'3"
Kitchen :	2.90 x 2.78	9'5" x 18'2"
Bedroom 1 :	3.20 x 3.10	10'5" x 10'2"
Bedroom 2 :	2.95 x 3.05	9'8" x 10'
Bedroom 3 :	2.90 x 2.55	9'5" x 8'3"
Bedroom 4 :	4.94 x 5.59	16'2" x 18'4"



GROUND FLOOR



FIRST FLOOR



SECOND FLOOR

All enquiries to:  
0844 4779451

The floor plans are for illustrative purposes only and are intended as a general indication. All measurements are taken from inside face of external walls and do not include any openings formed by galleries and stairs or garages.

A development by  

**prime**  
residential