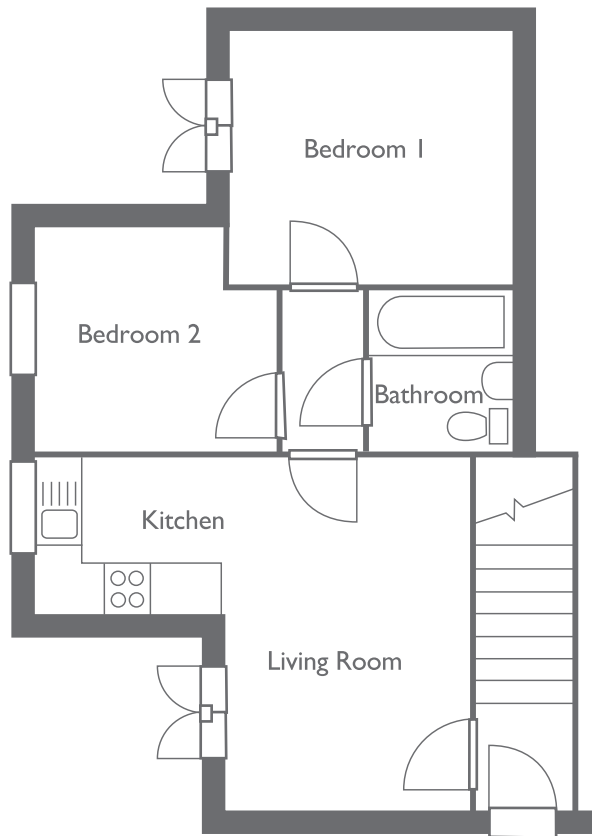
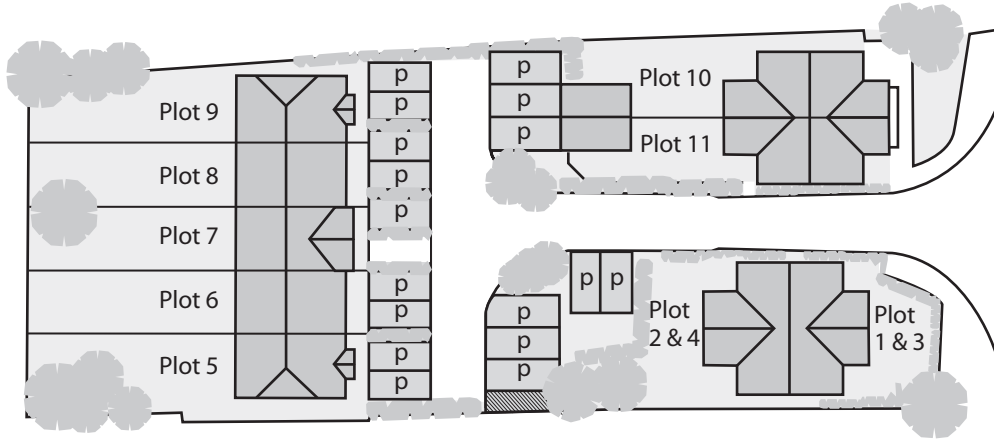


Plot 1	
Living Room :	3.70 x 4.47 12'2" x 14'8"
Kitchen :	2.17 x 1.92 7'1" x 6'4"
Bedroom 1 :	3.70 x 3.20 12'2" x 10'6"
Bedroom 2 :	3.70 x 2.88 12'2" x 9'6"

FLOOR PLANS – plot 1



GROUND FLOOR

All enquiries to:
0844 4779451

The floor plans are for illustrative purposes only and are intended as a general indication. All measurements are taken from inside face of external walls and do not include any openings formed by galleries and stairs or garages.