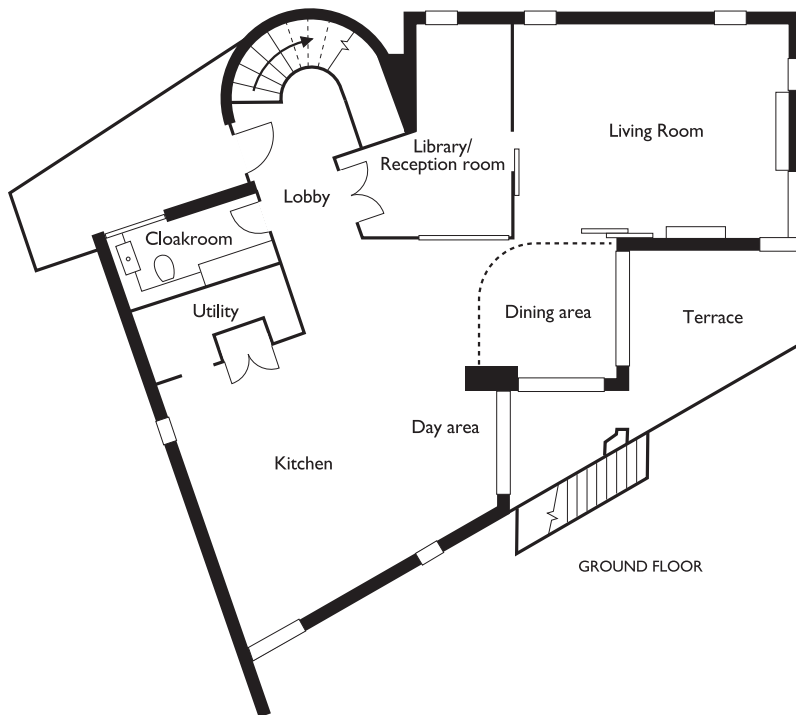
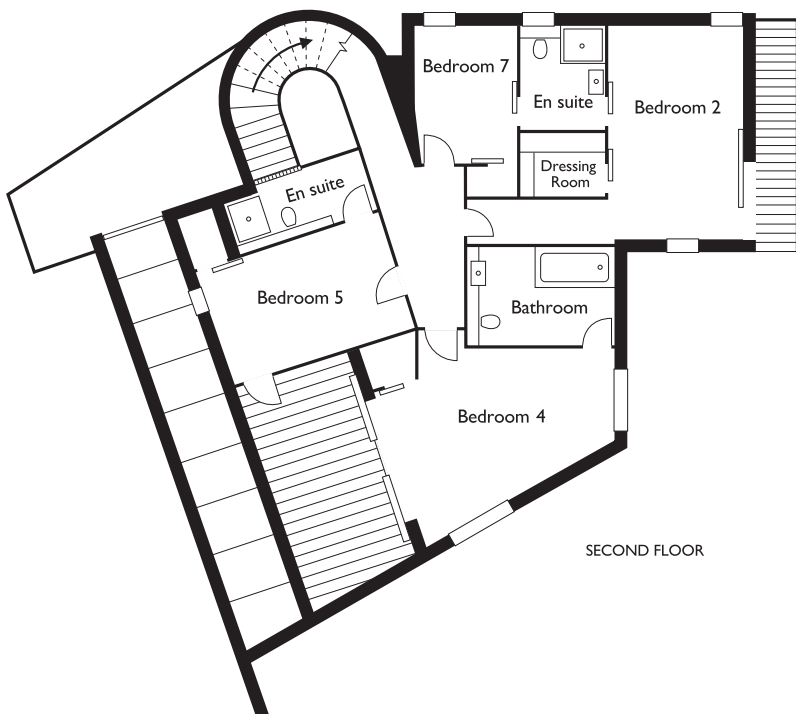
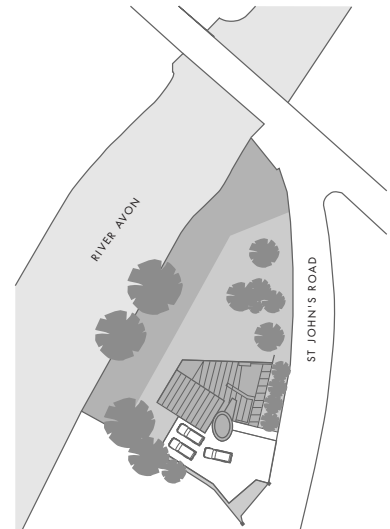
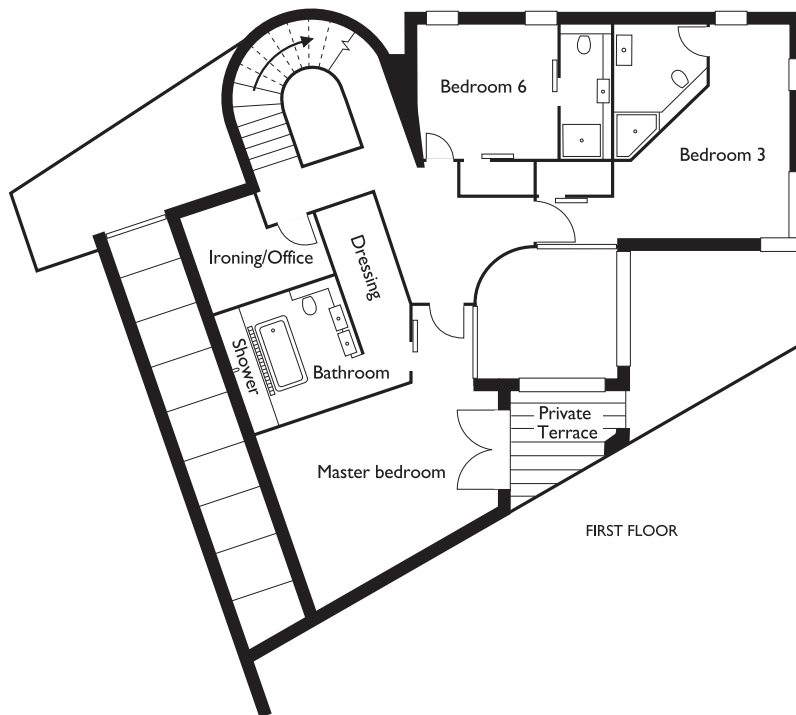


FLOOR PLANS – Riverside, Bath



Riverside, Bath	
Kitchen/Dining	8 x 12
Library/Reception	5.35 x 4
Living room	6.80 x 5.55
Utility	1.75 x 3.85
Master bedroom:	6.35 x 5.90
Master bathroom:	3.05 x 4.40
Bedroom 3:	5.50 x 6.30
Bedroom 6:	3.40 x 3.50
Bedroom 2:	5.55 x 6.95
Bedroom 4:	6.00 x 5.40
Bedroom 5:	4.75 x 2.90
Bedroom 7:	3.40 x 2.50



All enquiries to:
0844 477 9452

The floor plans are for illustrative purposes only and are intended as a general indication. All measurements are taken from inside face of external walls and do not include any openings formed by galleries and stairs or garages

A development by

prime
 residential